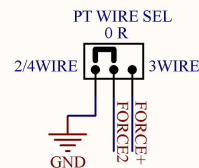
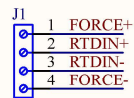


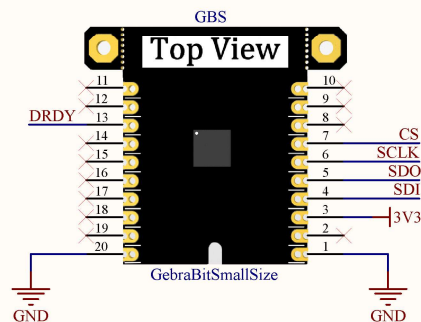
***JUMP FORCE- TO RTDIN- AND FORCE+ TO RTDIN+ FOR 2 WIRE CONNECTION**
***JUMP FORCE- TO RTDIN- FOR 3 WIRE CONNECTION**
***DO NOT JUMP ANYTHING FOR 4 WIRE CONNECTION**



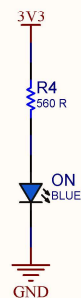
By default "PT WIRE SEL" jumper is shorted to the GND

PT CONNECTION TERMINAL

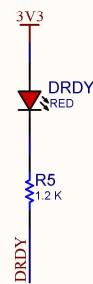
PT WIRE SEL



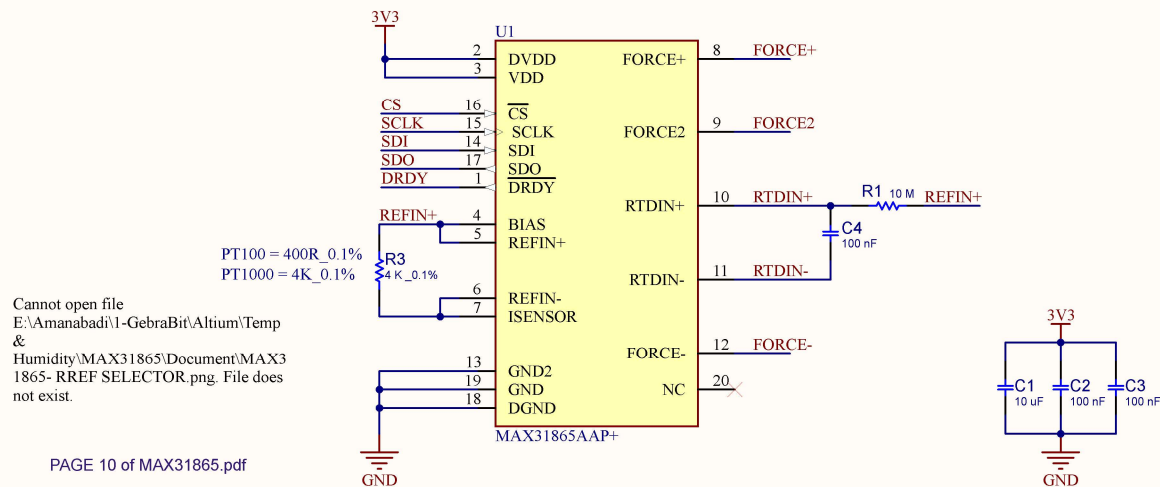
GEBRABIT PINOUT



POWER LED



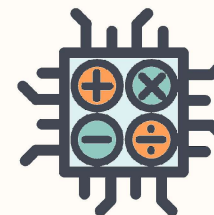
DRDY LED



Cannot open file
E:\Amanabadi\1-GebraBit\Altium\Temp
&
Humidity\MAX31865\Document\MAX3
1865- RREF SELECTOR.png. File does
not exist.

PAGE 10 of MAX31865.pdf

MAX31865



GebraBit
[HTTPS://GEBRABIT.COM/](https://gebrabit.com/)

Title: GebraBit MAX31865 Schematics		Variant: [No Variations]
Page Contents: GebraBit MAX31865 Circuits		Checked by: R.A
Size: SMALL	SKU CODE: GB622EN	Revision: V2.0
Date: 05/07/2024	Designed by: GEBRABIT	Sheet 1 of 1