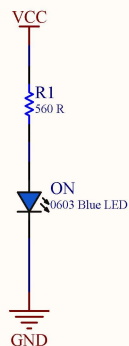
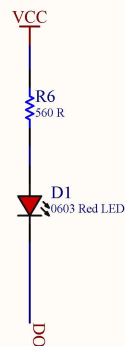


By default "VCC SEL"  
jumper is shorted to the 5V

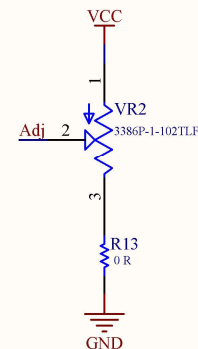
## VCC SEL



## POWER LED

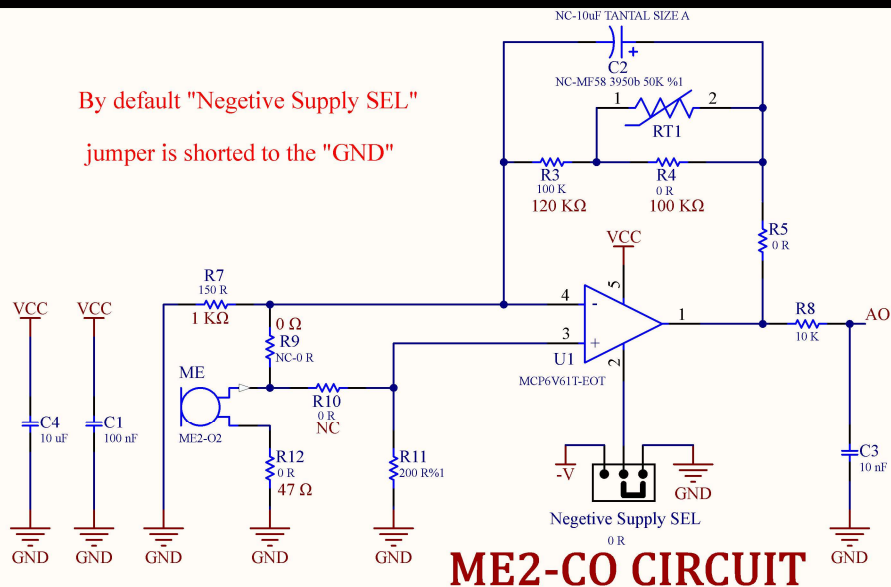


## THRESHOLD LED

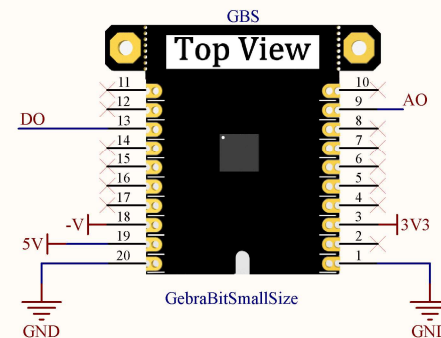


## THRESHOLD POT

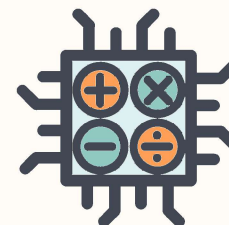
By default "Negative Supply SEL"  
jumper is shorted to the "GND"



## ME2-CO CIRCUIT



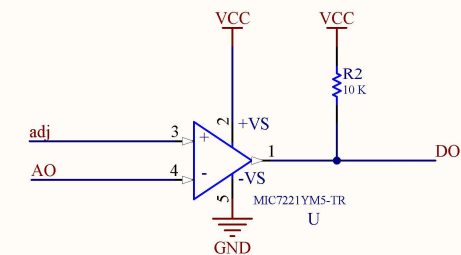
## GEBRABIT PINOUT



GebraBit

[HTTPS://GEBRABIT.COM/](https://gebrabit.com/)

Title: GebraBit ME2-CO Schematics		Variant: [No Variations]
Page Contents: GebraBit ME2-CO Circuits		Checked by: M.Z
Size: SMALL	SKU CODE: GB603EN	Revision: V2.0
Date: 07/06/2024	Designed by: GEBRABIT	Sheet 1 of 1



## COMPARATOR CIRCUIT